

Kristin's Favorite Carry-All

— KRISTIN NICHOLAS —

MORE THAN TEN YEARS AGO Kristin Nicholas was given a woven wool bag from Ecuador as a gift and ever since has been both using it and wanting to design a knitted one like it. “It’s a great size,” she says. “As my life has changed, it’s gone from being a knitting bag, to an overnight bag, to a diaper bag.” So for this issue of *Knits*, at last she has designed the knitted version of her favorite carry-all, drawing upon the motifs in Turkish carpets and Scandinavian Fair Isles for extra inspiration. Kristin worked her new bag in the round, cutting it to form a front and a back, then used a “gusset” strip to join the two pieces along the sides and bottom. She purposely chose a two-color (burnt orange and brown) motif with small repeats so that it would be easy to memorize and easy to knit, then added a dash of extra color (chartreuse) with duplicate stitch. For stability, especially when carrying heavy loads, Kristin lined the bag with cotton fabric.

Finished Size About 16" (40.5 cm) wide, 18" (46 cm) long excluding handle, and 2" (5 cm) deep.

Yarn Classic Elite Montero (50% llama, 50% wool; 127 yd [116 m]/100 g): #3876 pacha mama brown and #3868 ancient orange, 3 skeins each; #3835 lima green, 1 skein. Small amount of strongly plied yarn in a coordinating color for seaming.

Needles Size 9 (5.5 mm). Adjust needle size if necessary to obtain the correct gauge.

Notions Tapestry needle; one 1¼" (3.2-cm) button; 5/8 yd [60 cm] lining fabric.

Gauge 18 sts and 20 rows = 4" (10 cm) in color pattern.

Body

With brown, CO 158 sts. Place marker (pm) and join, being careful not to twist sts. Join orange and beg with Row 1, work through Row 30 of chart 2 times (noting that only one side of the bag is charted),



Chris Hartlove

then work Rows 1–28—piece should measure 18" (46 cm) from beg. BO all sts. **Cut steeks:** Machine-zigzag down each side of the center 2 sts of each 6-st dot (steek) patt. Then machine-stitch just inside (in the ditch) of the large pattern at each side of the dot patts. Cut between the zigzag sts. **Upper edge:** With green, pick up and knit 73 sts along top edge of each piece. Knit 3 rows. BO in knit.

Gusset

With brown, CO 13 sts. Work stripe patt as foll:

Row 1: (RS) With brown, knit.

Rows 2 and 4: With brown, knit.

Row 3: With brown, purl.

Rows 5 and 6: With orange, knit.

Row 7: With orange, purl.

Row 8: With orange, knit.

Rep Rows 1–8 until piece measures 49" (124.5 cm) from beg. BO all sts.

Finishing

Handle: With brown, CO 13 sts. Work stripe patt as foll:

Rows 1 and 2: With brown, knit.

Rows 3 and 4: With orange, knit.

Rep Rows 1–4 until piece measures about 30" (76 cm) or desired length, keeping in mind that the knitted strip will stretch when the bag is weighted. **Button flap:**

With brown, CO 11 sts. Work stripe patt as foll:

Rows 1 and 2: With brown, knit.

Rows 3 and 4: With green, knit.

Rep Rows 1–4 until piece measures 5½" (14 cm) from beg. On next row, work buttonhole as foll: K3, BO 5 sts, knit to end. On next row, CO 3 sts over the BO sts. Cont in stripe patt until piece measures 6½" (16.5 cm) from beg. BO all sts. **Duplicate stitch:** With green, work duplicate st (see illustration at right) as indicated on chart. With seaming yarn threaded on tapestry needle, sew gusset to one side of bag by stitching down one side, around bottom, and up the other side, working seam so that

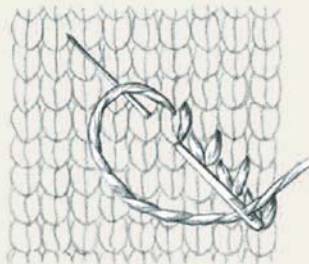
the 6-st dot patts do not show. Attach gusset to other side of bag in the same manner. Sew CO and BO edges of handle to tops of gusset. Sew button flap to center top of one side. Sew on button opposite buttonhole. **Lining:** Measure bag width and length. Cut lining fabric 1" (2.5 cm) wider and 1" (2.5 cm) longer than these measurements. Fold in half with RS facing and machine-stitch along open side and across bottom. Turn under top edge. Pin to inside of bag. Hand-stitch in place. ∞

Kristin Nicholas is creative director of Classic Elite Yarns.



Chris Hartlove

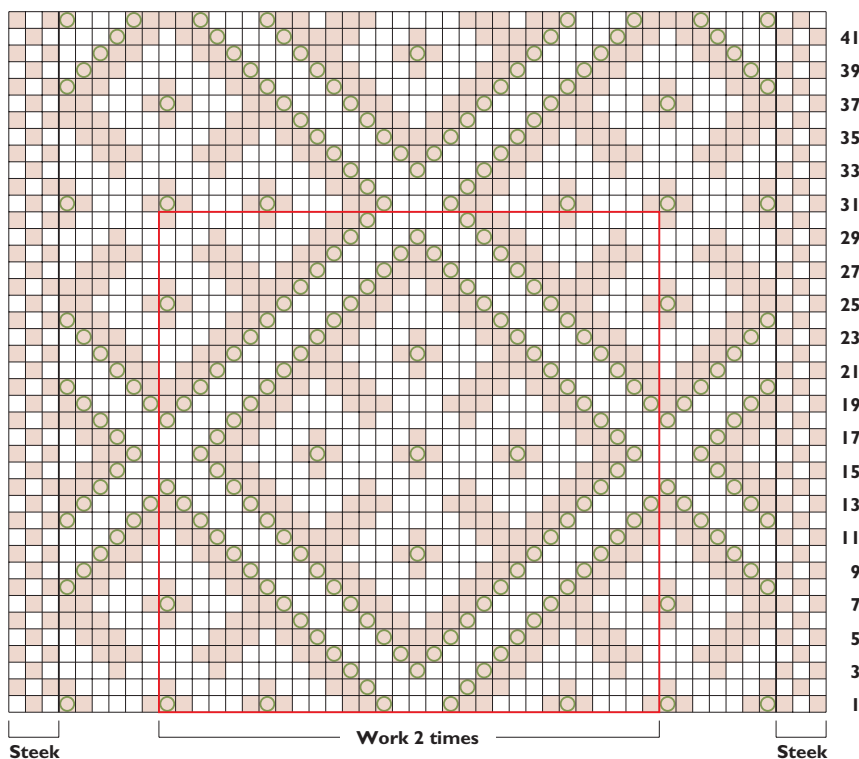
Duplicate Stitch



Bring threaded needle out from back to front at base of V of knitted stitch you want to cover. *Working right to left, pass needle in and out under the stitch in the row above it and back into the base of same stitch. Bring needle back out at base of the V of next stitch you want to cover. Repeat from *.

- pacha mama brown
- lima green duplicate st
- ancient orange
- pattern repeat

Note: Chart is for one side of bag; work entire chart a second time for second side of bag.





RISK-FREE TRIAL OFFER

Discover knitwear designs that will capture your imagination.

You don't have to be a designer or a knitting pro to make beautiful knitted garments and accessories, and you don't have to hunt all over for inspiring designs.

From cover to cover, *Interweave Knits* magazine gives you great projects, from the beginner to the advanced. Every issue is packed full of captivating smart designs, step-by-step instructions, easy-to-understand illustrations, plus well-written, lively articles sure to inspire.

Take advantage of this special risk-free offer today!

www.interweave.com/go/knitsJPDP6